

ArcticSGD - Dopyływ Wód Podziemnych w Zmieniającej się Arktyce: Zasięg i Wpływ Biogeochemiczny

Beata Szymczycha

22.05.2023

Project is operated and co-financed by:



Project is implemented by:



Project is implemented in partnership with:



RAW - Recesja i Więdnięcie– Jaki jest wpływ recesji lodowców, z uchodzących do morza na ląd, na morską produkcję biologiczną i biogeochemię morza w Arktyce?

Beata Szymczycha

22.05.2023

Project is operated and co-financed by:



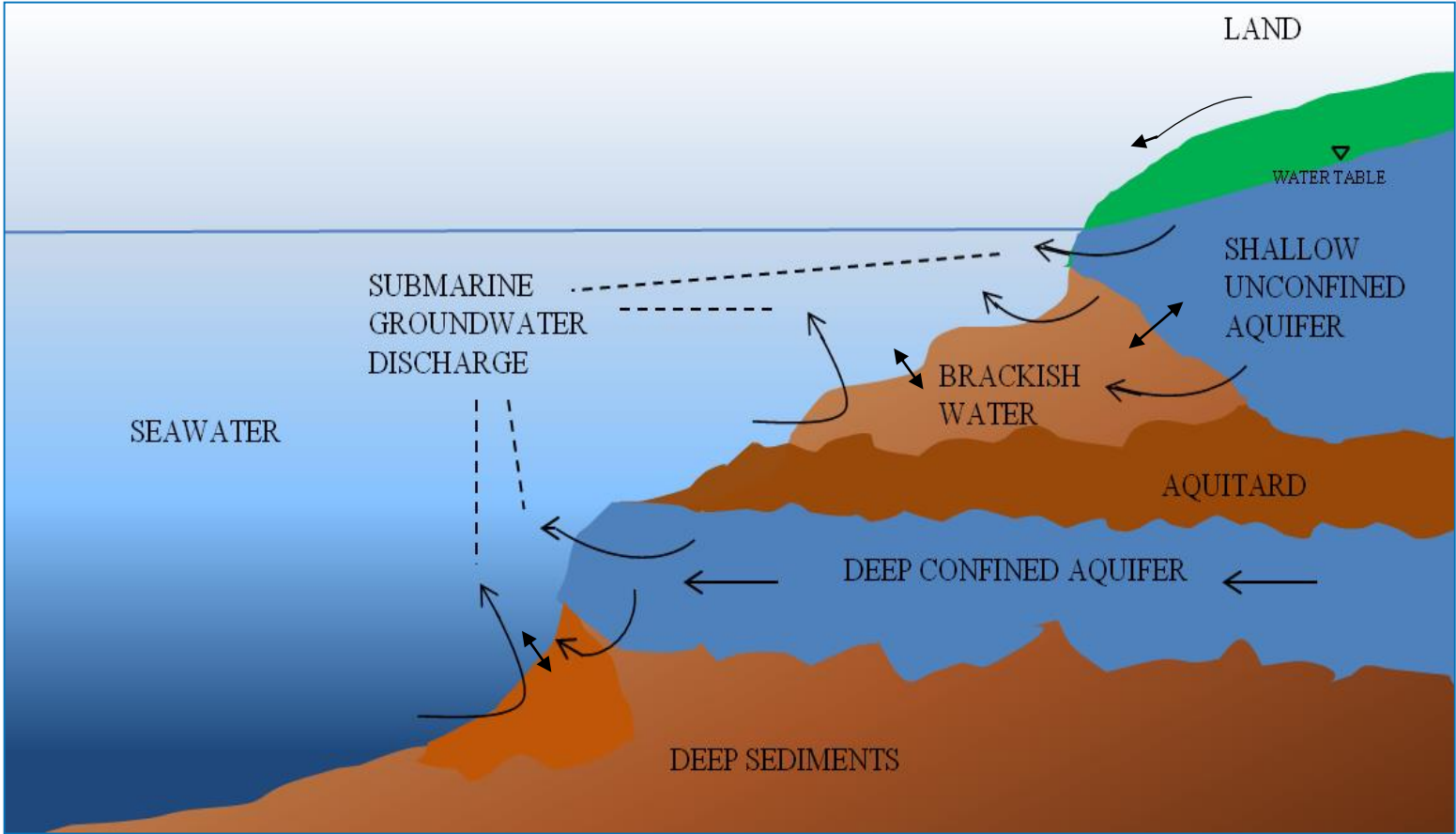
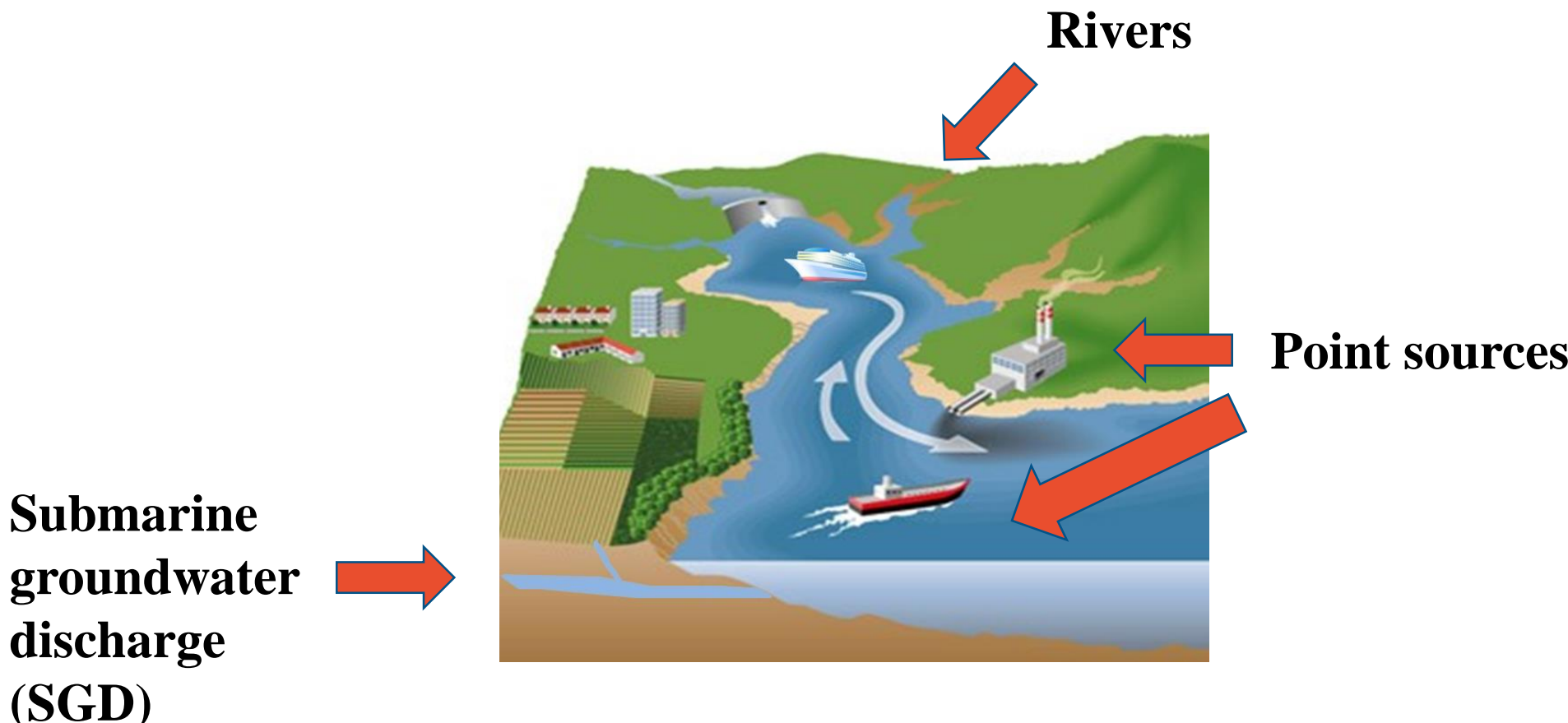
Project is implemented by:



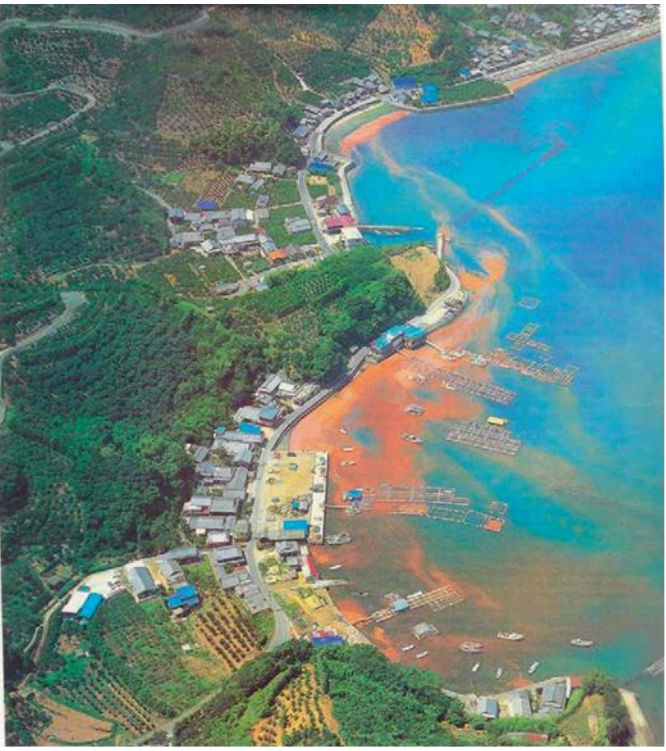
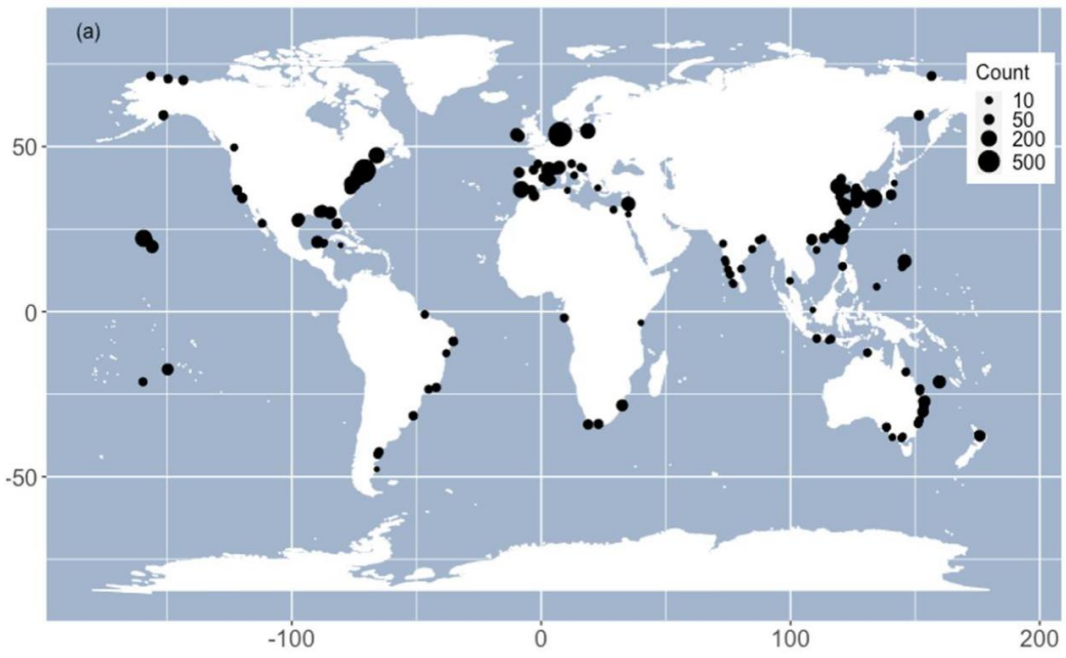
Project is implemented in partnership with:



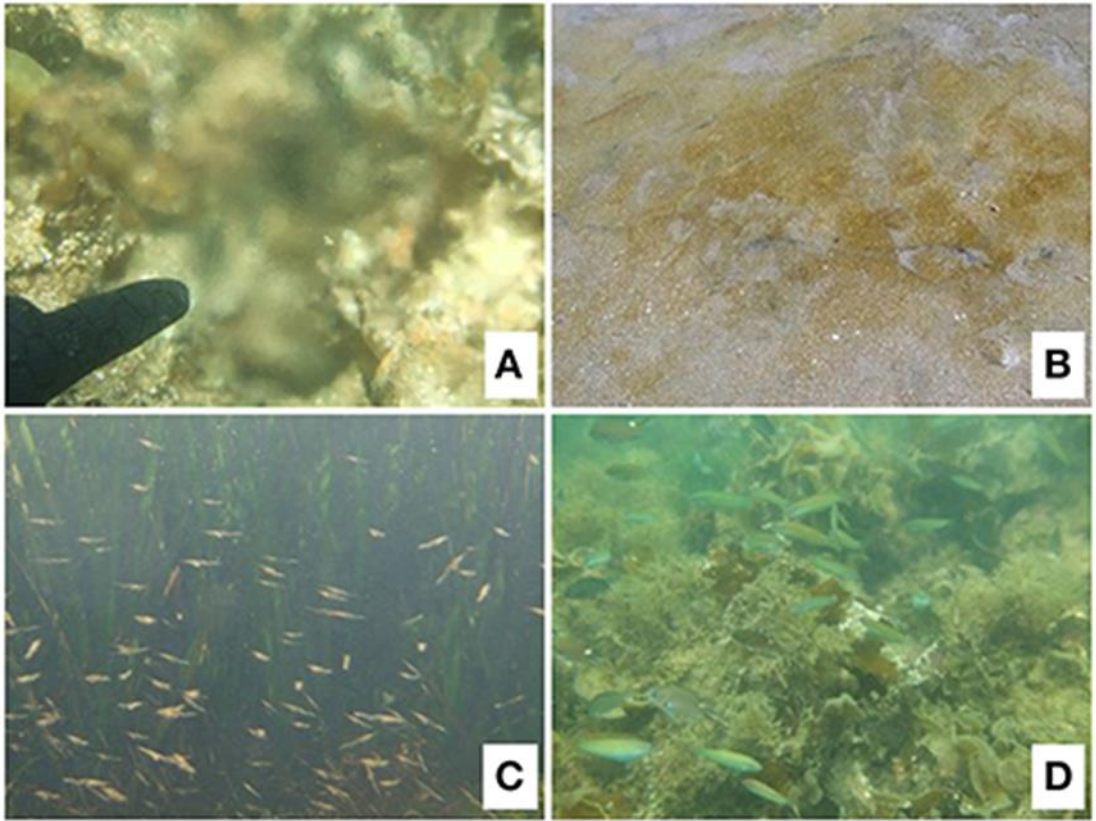
ArcticSGD: Motywacja



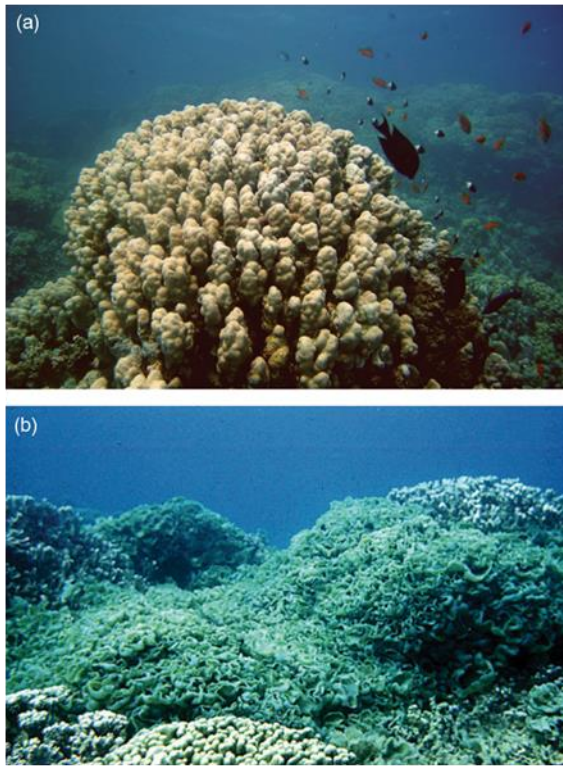
Modified after Burnett, 2006



Knee and Paytan, 2011



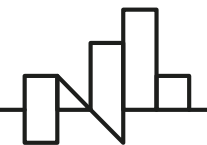
Fujita et al. 2019



Knee and Paytan, 2011



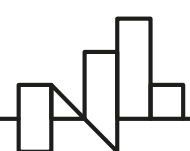
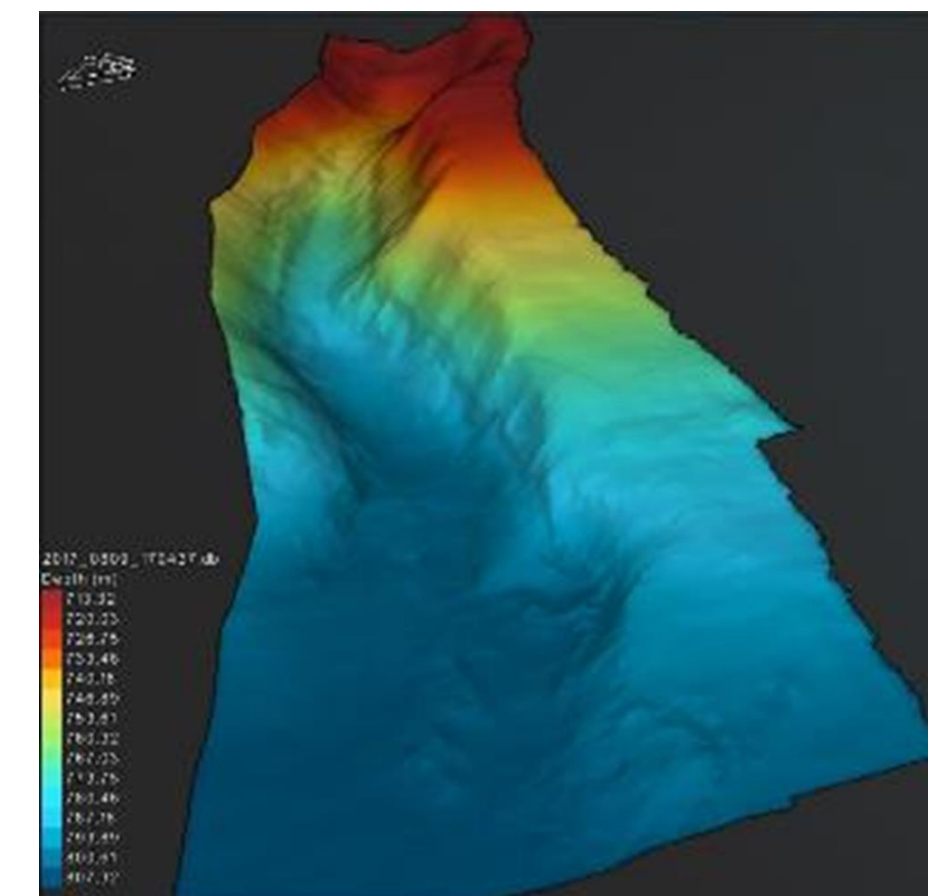
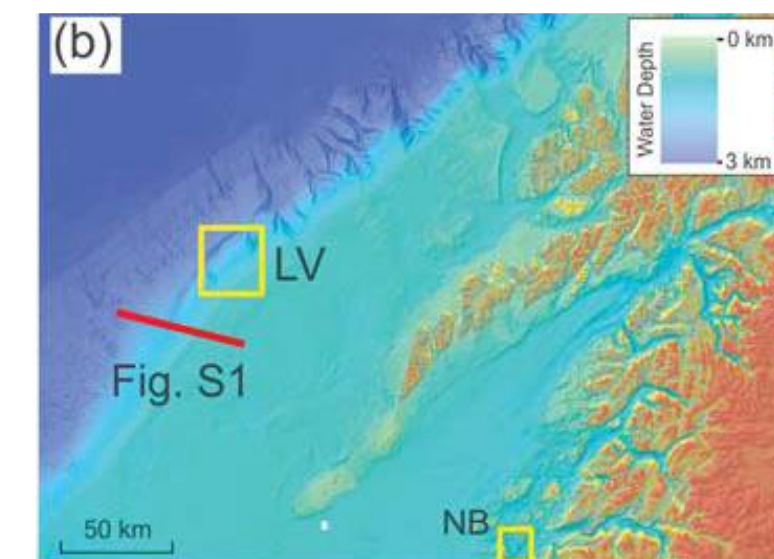
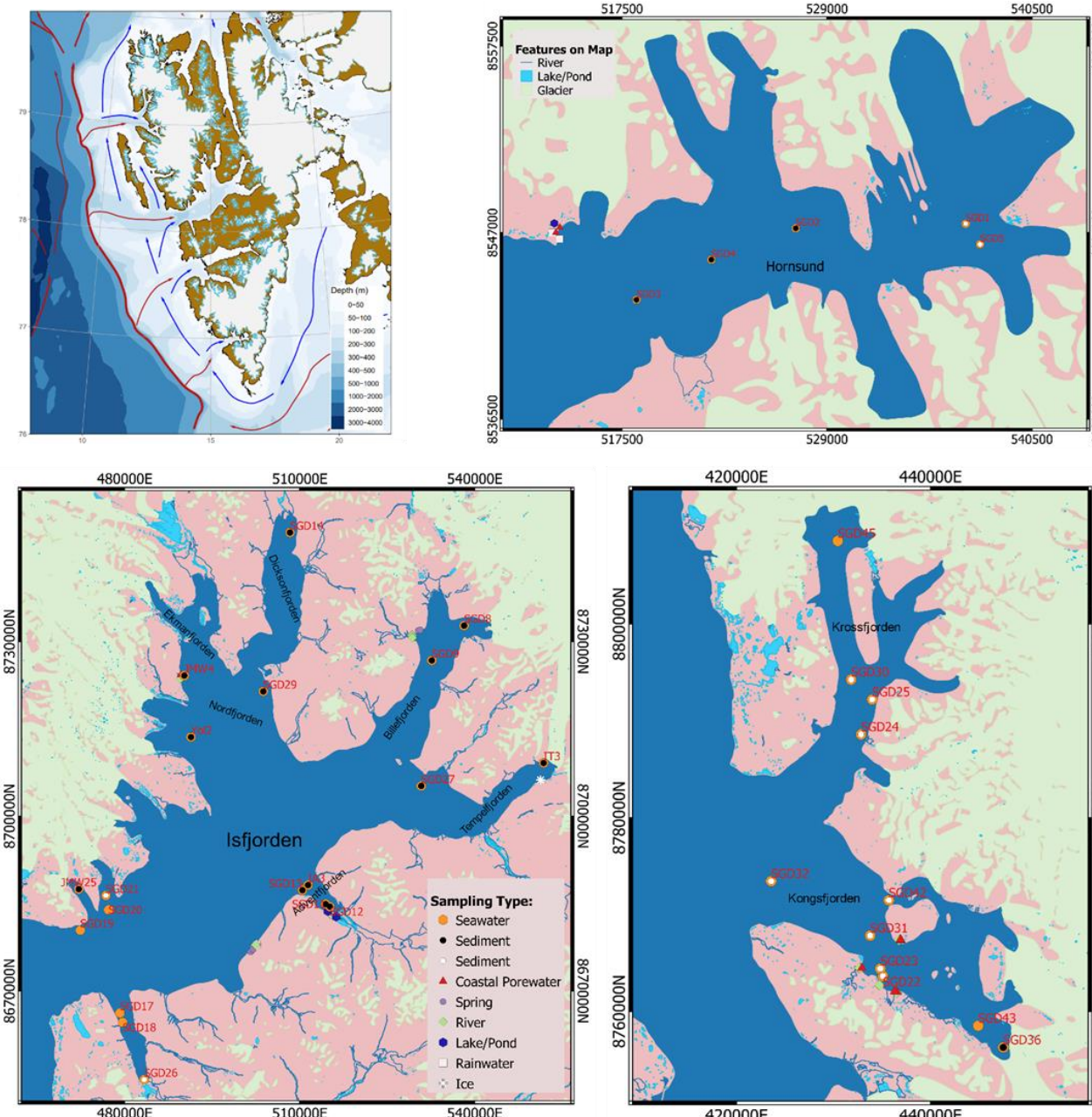
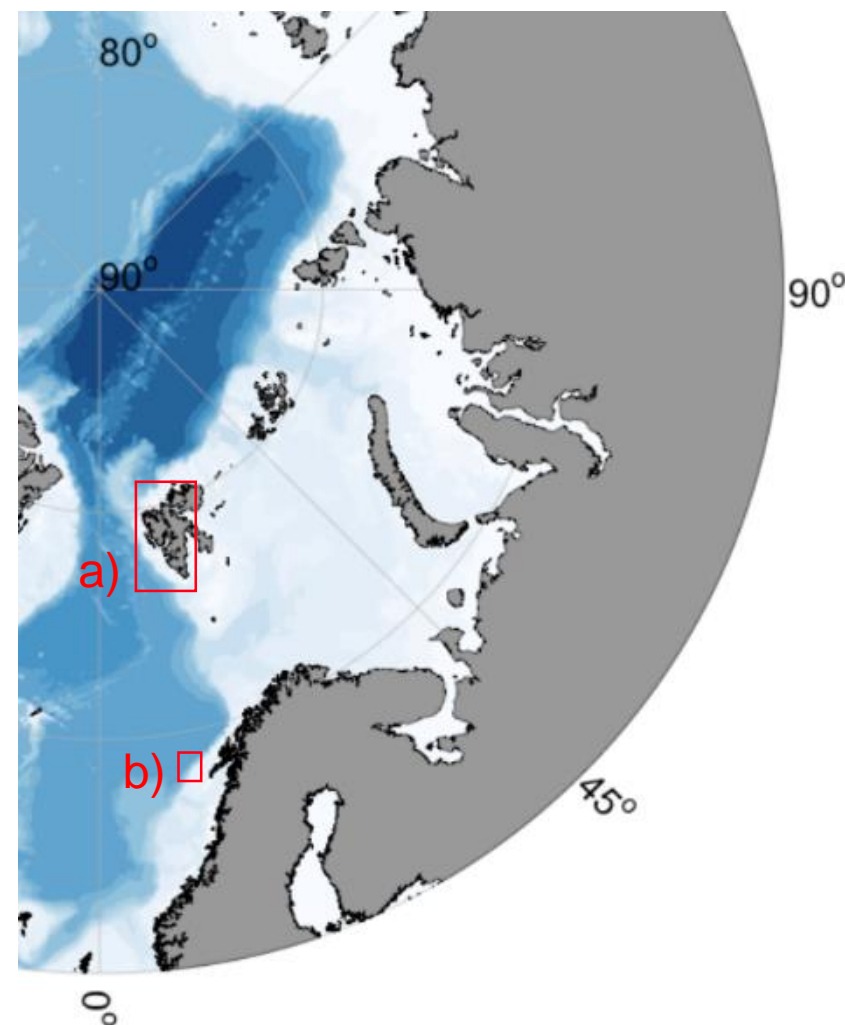
Knee and Paytan, 2011



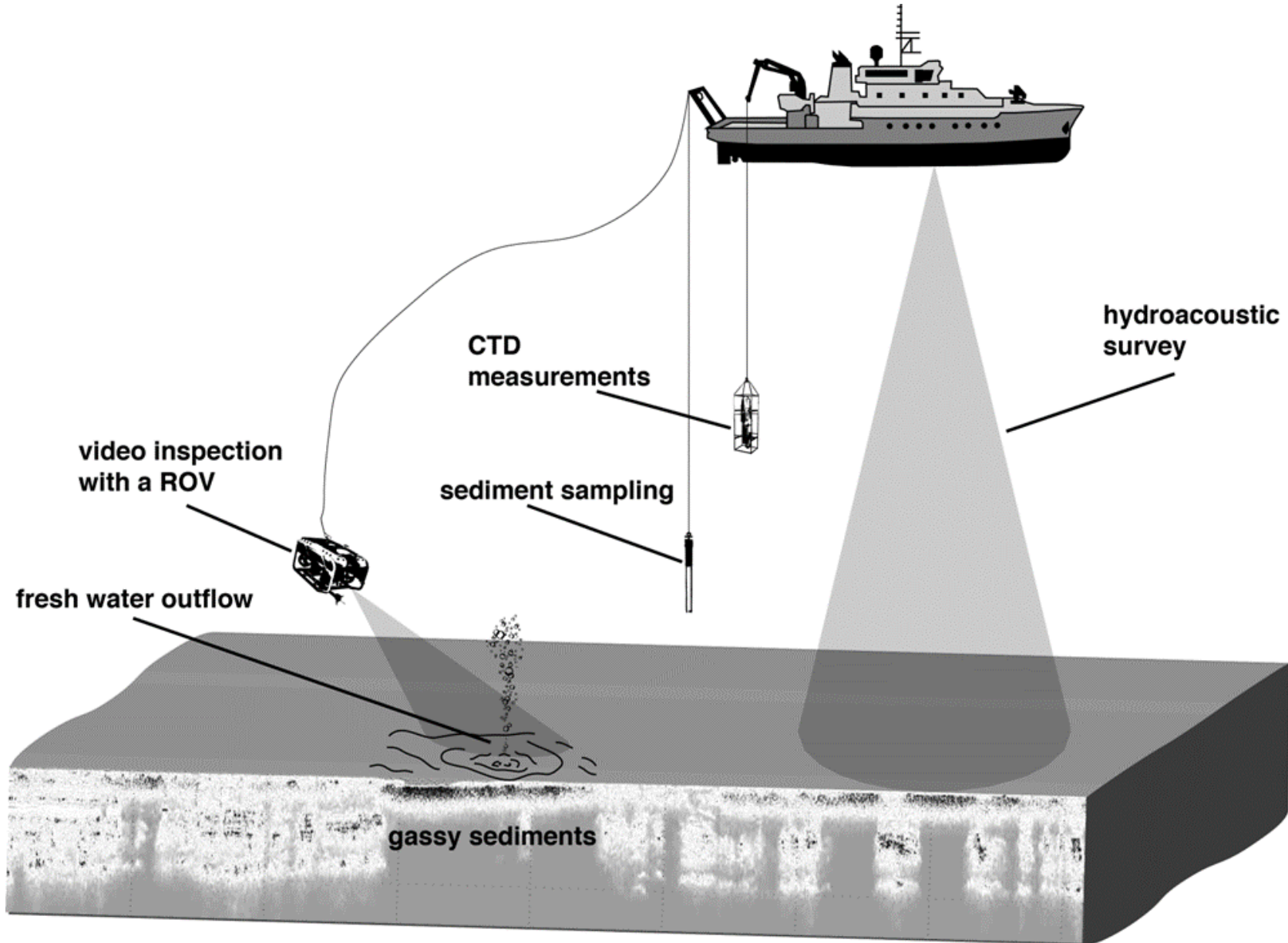
ArcticSGD cele projektu/ zakres badań

- Identyfikacja miejsc wsięku SGD w rejonach polarnych i subpolarnych
- Charakterystyka wód podziemnych
- Określenie jak zmiany klimatu wpływają na cyrkulacje wód podziemnych
- Ocena wpływu wsięku SGD na chemie osadów morskich
- Ocena wpływu wsięku SGD na funkcjonowanie bentosu
- Identyfikacja SGD w kolumnie wody

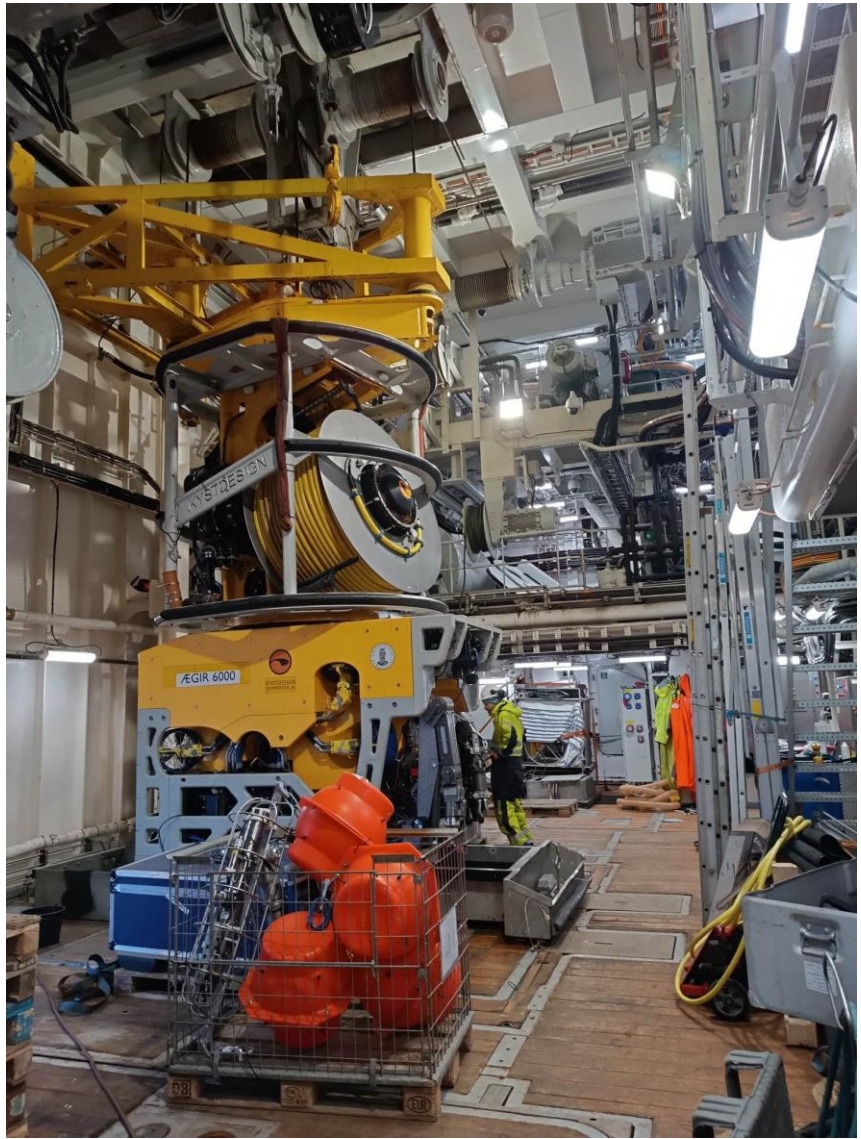
Miejsca badań



ArcticSGD: Materiały i metody



r/v Oceania



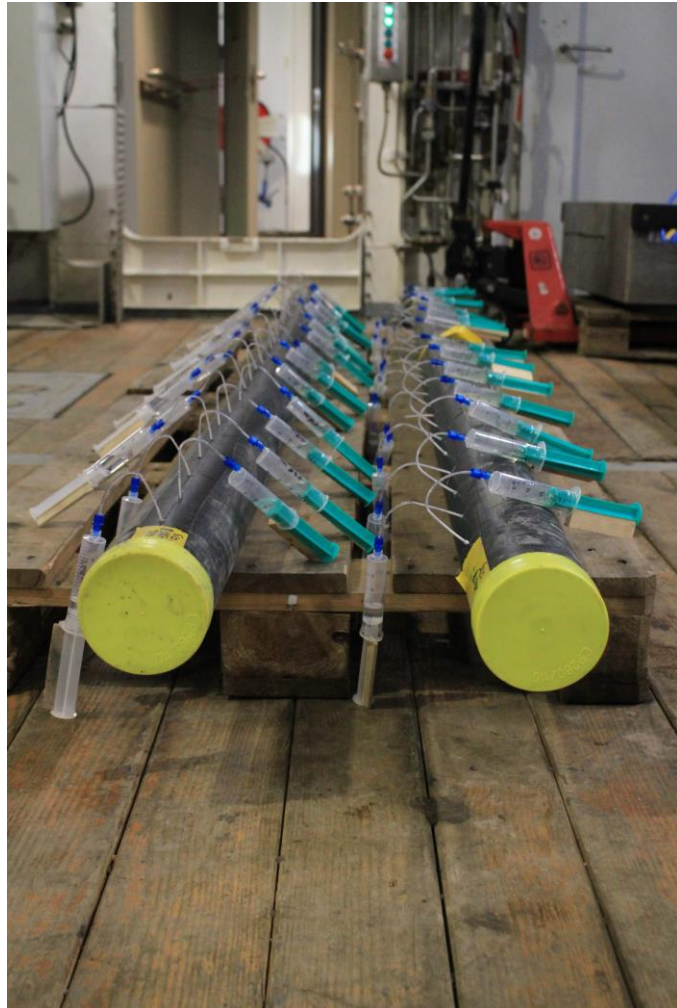
r/v Kronprins Haakon



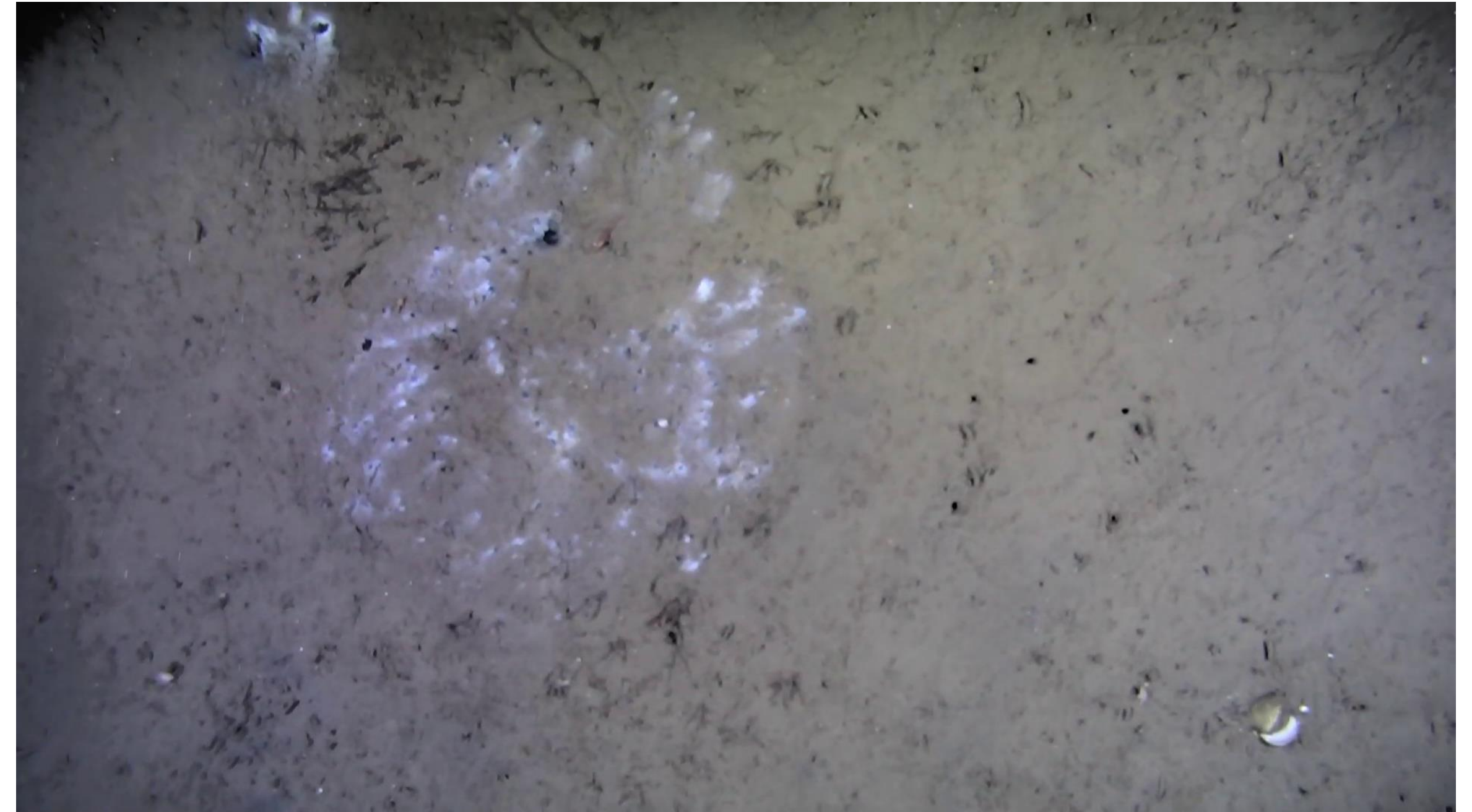
ROV Aurora



r/v G.O. Sars



ArcticSGD:Charakterystyka dna



ArcticSGD:Wyniki

Hornsund FF%

min max

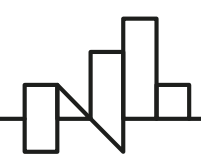
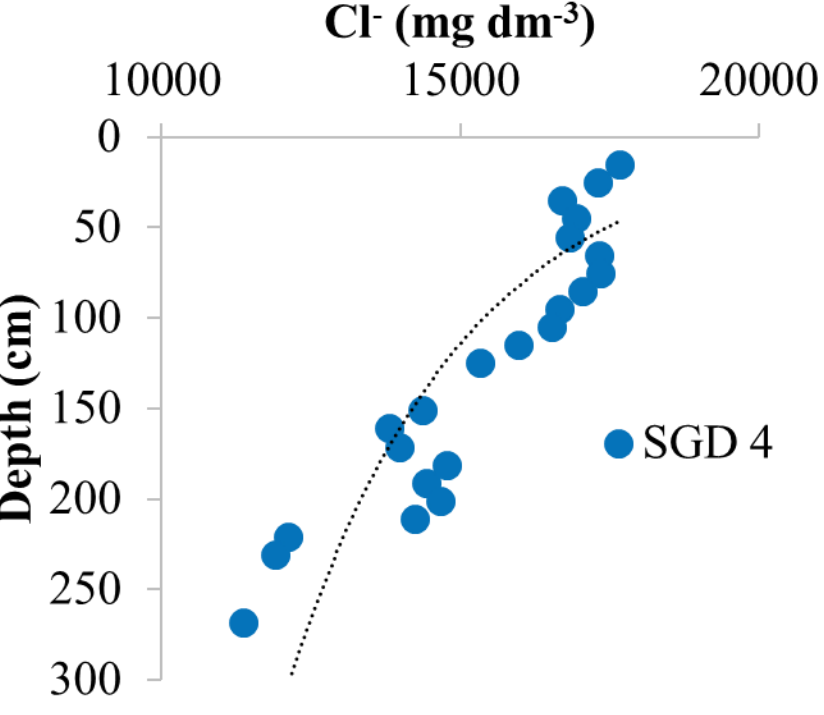
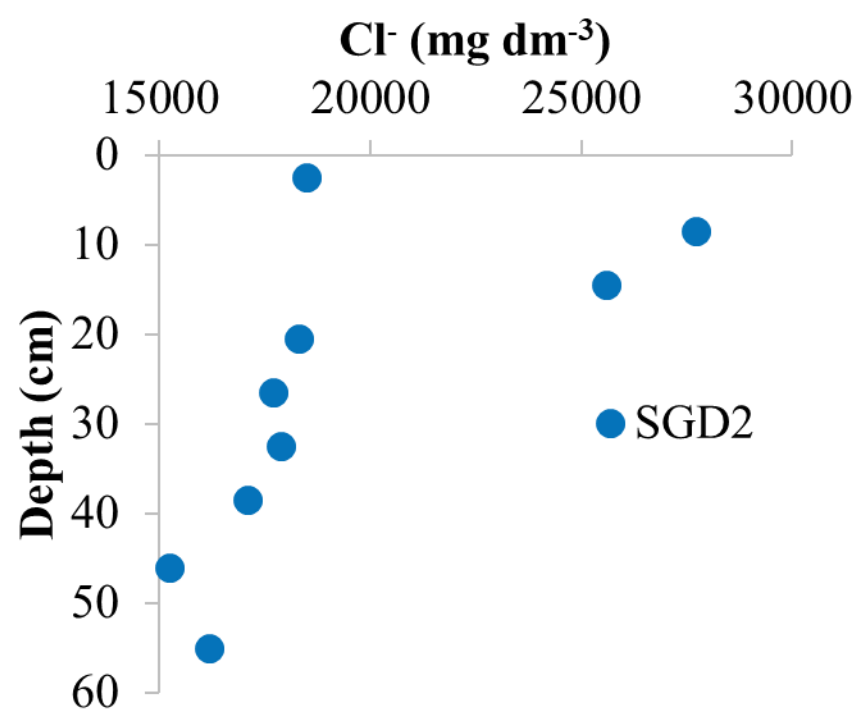
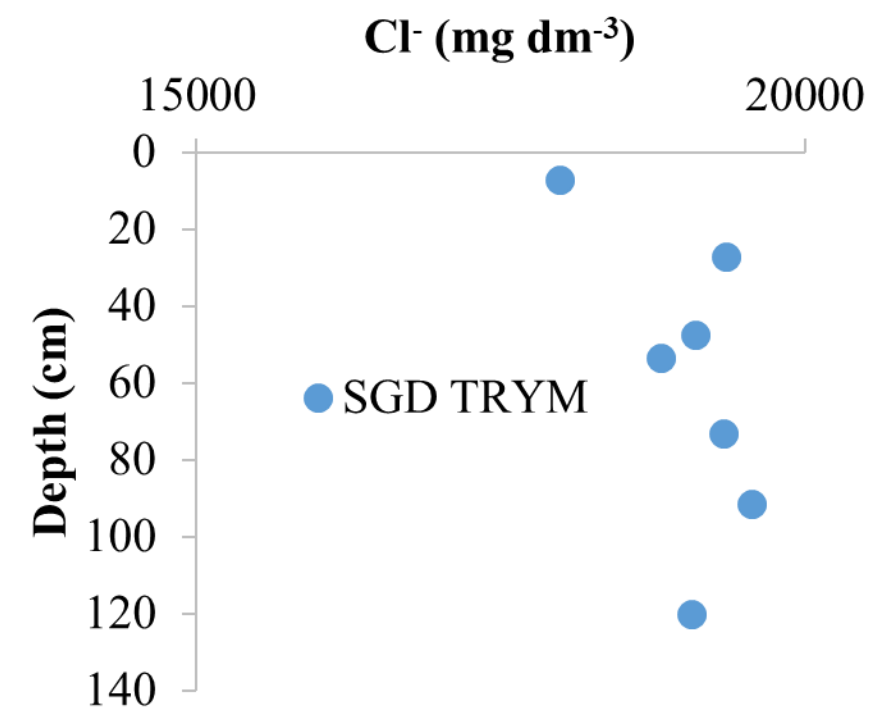
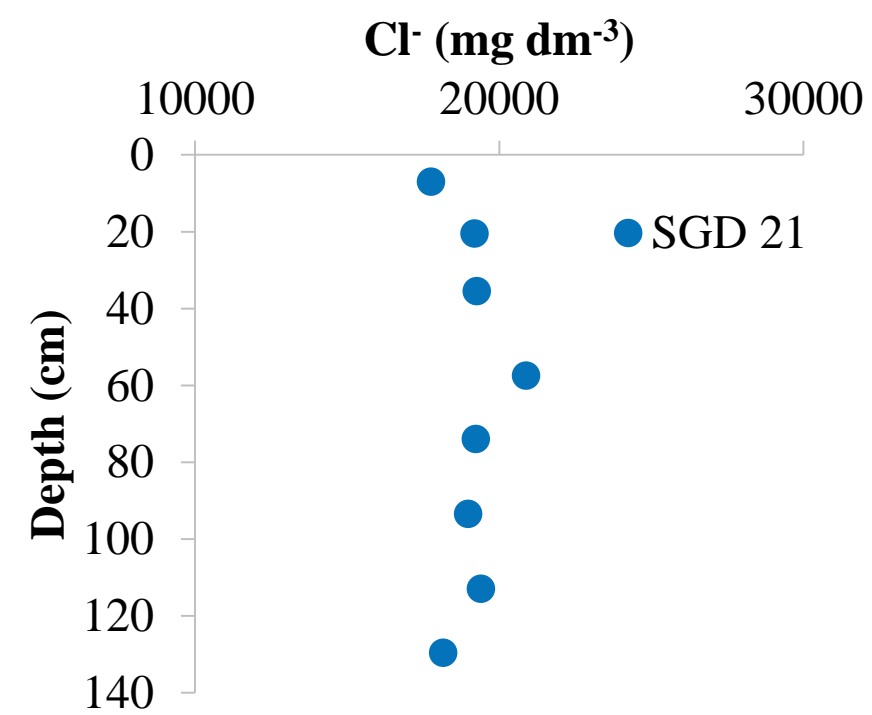
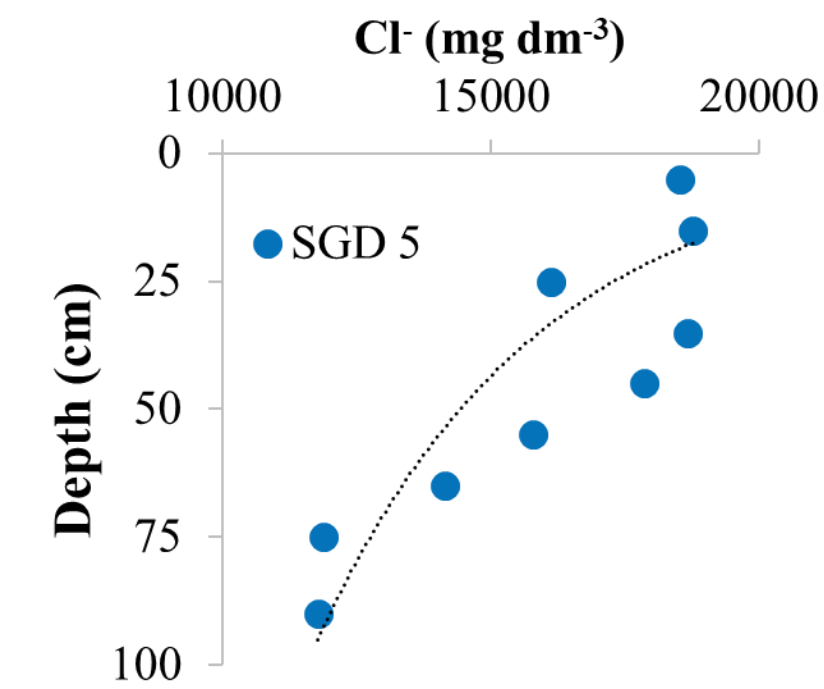
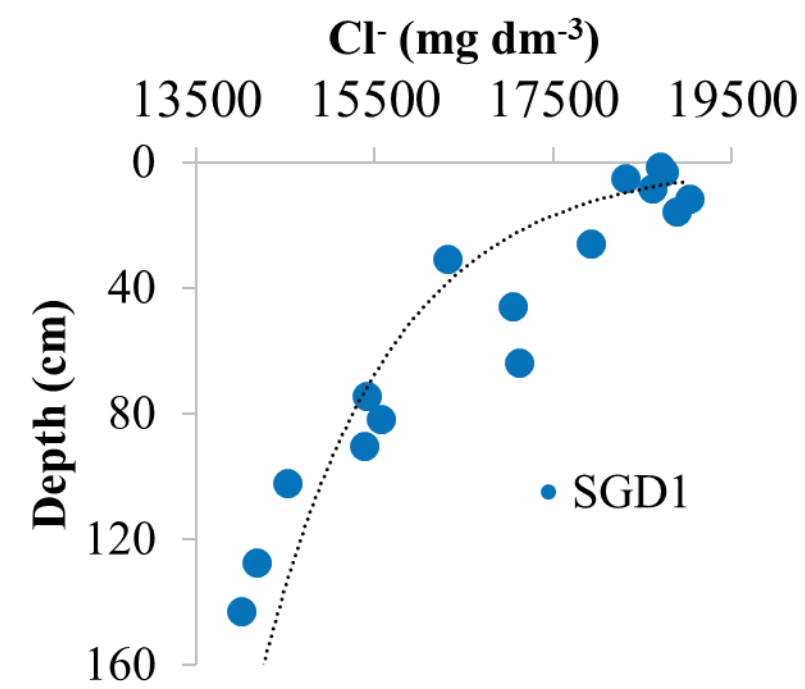
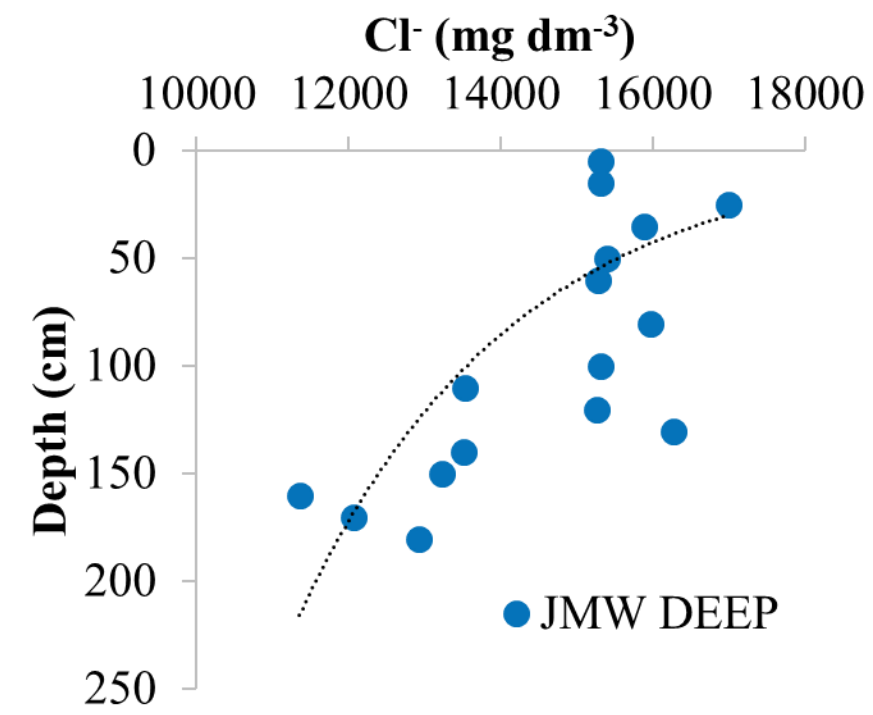
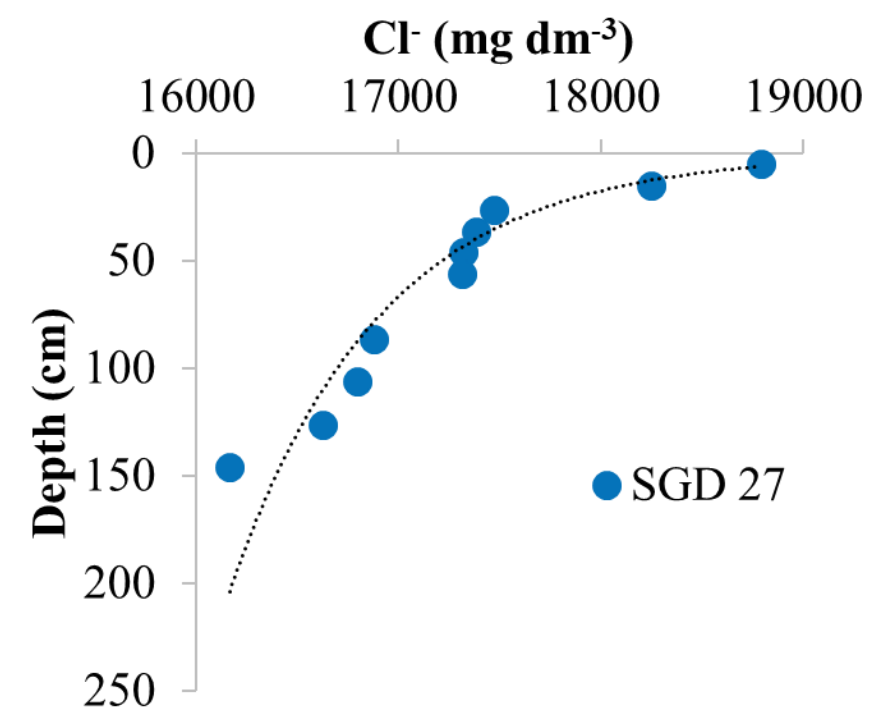
SGD1 1.0 26.0

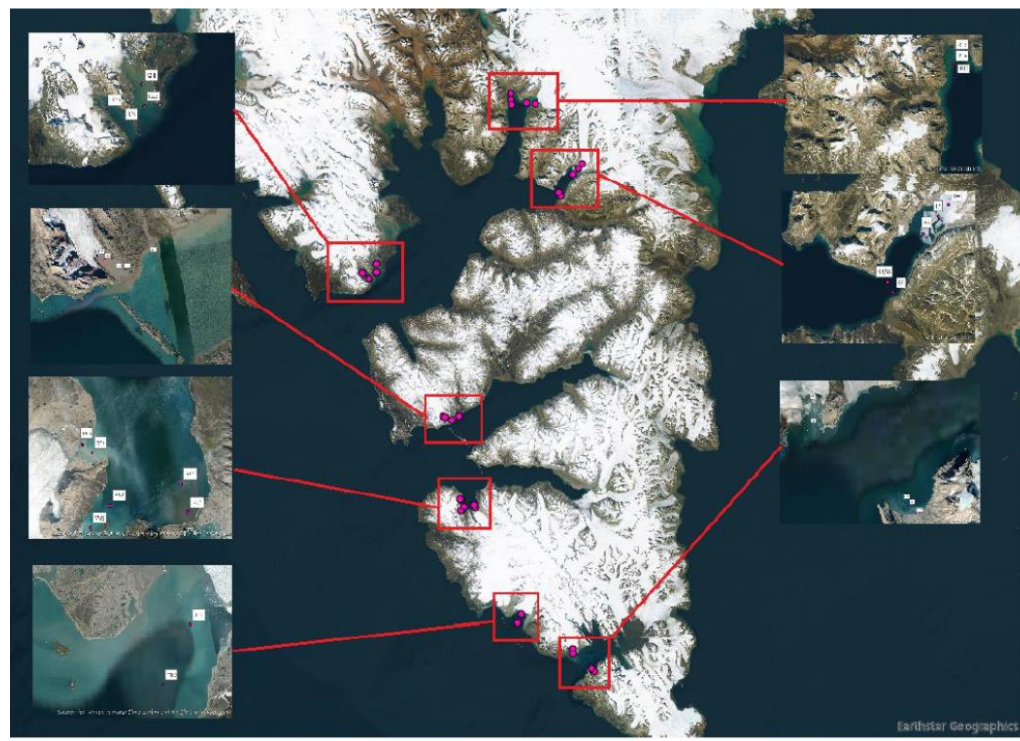
SGD5 0.9 37.8

SGD2 2.4 19.6

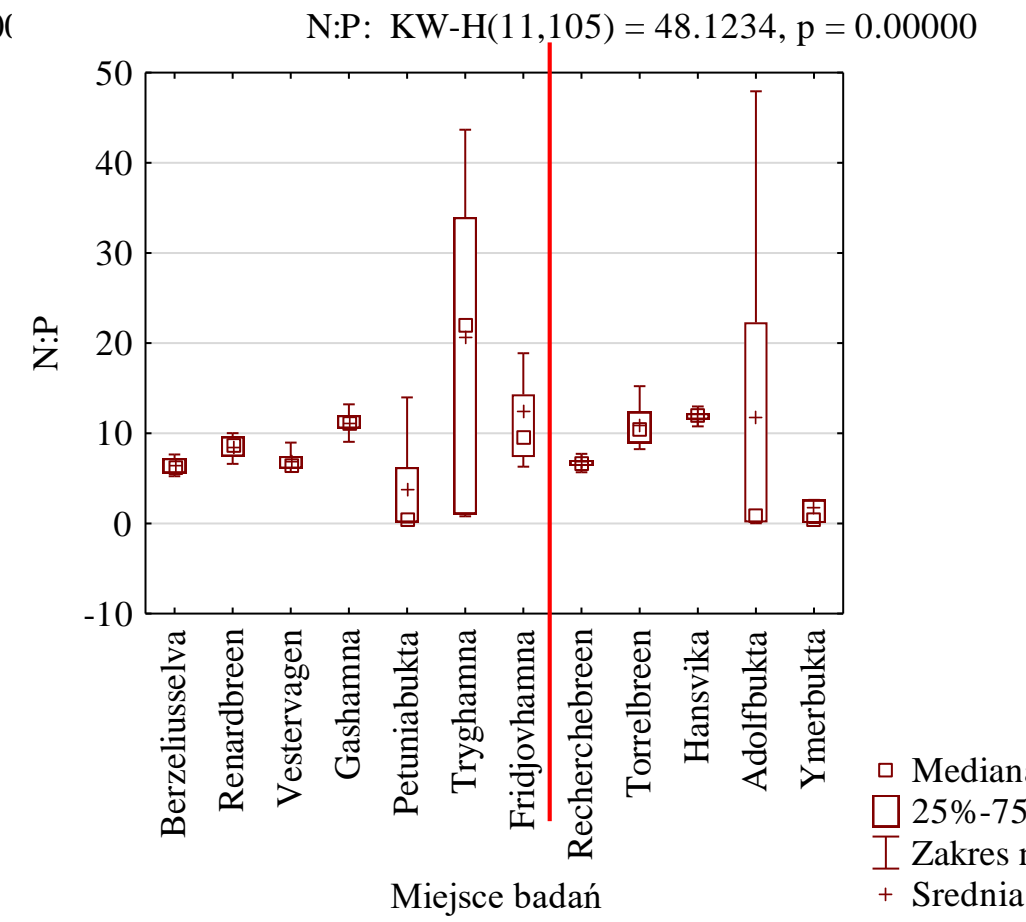
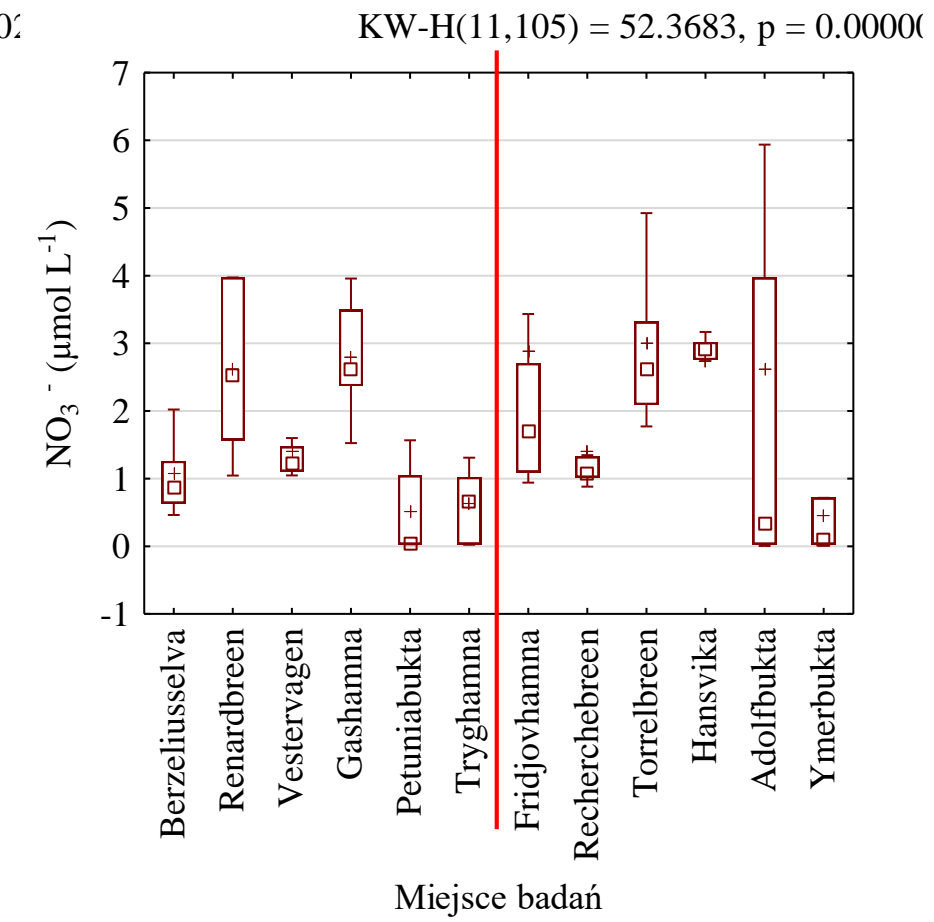
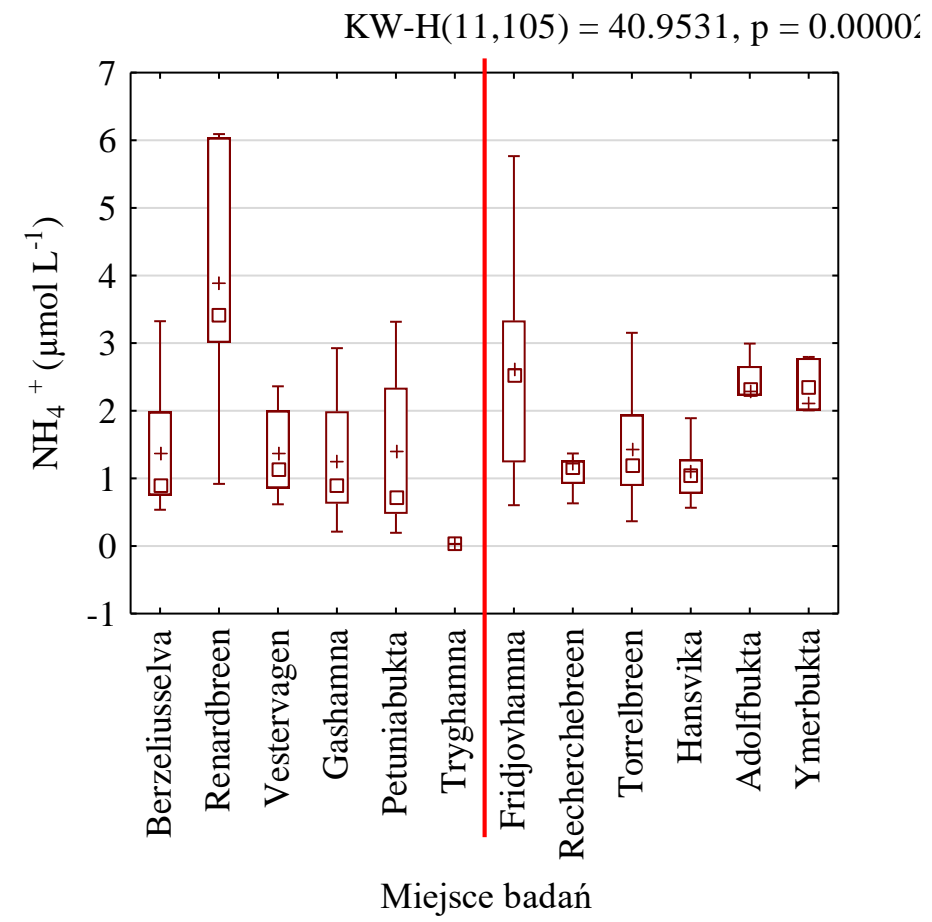
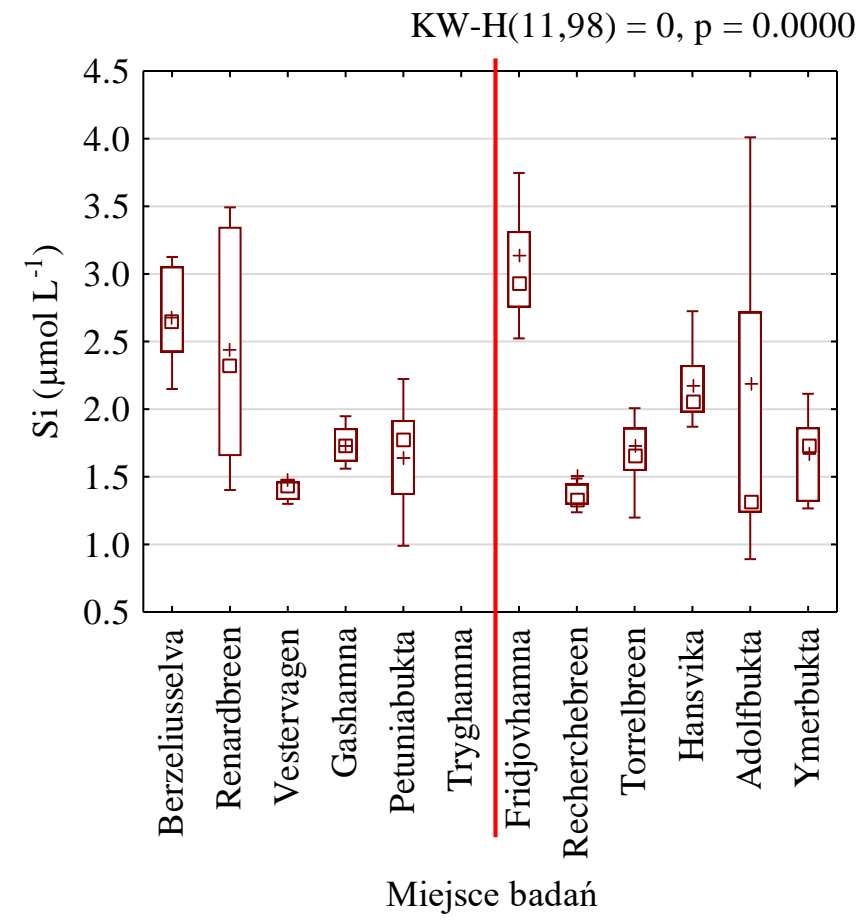
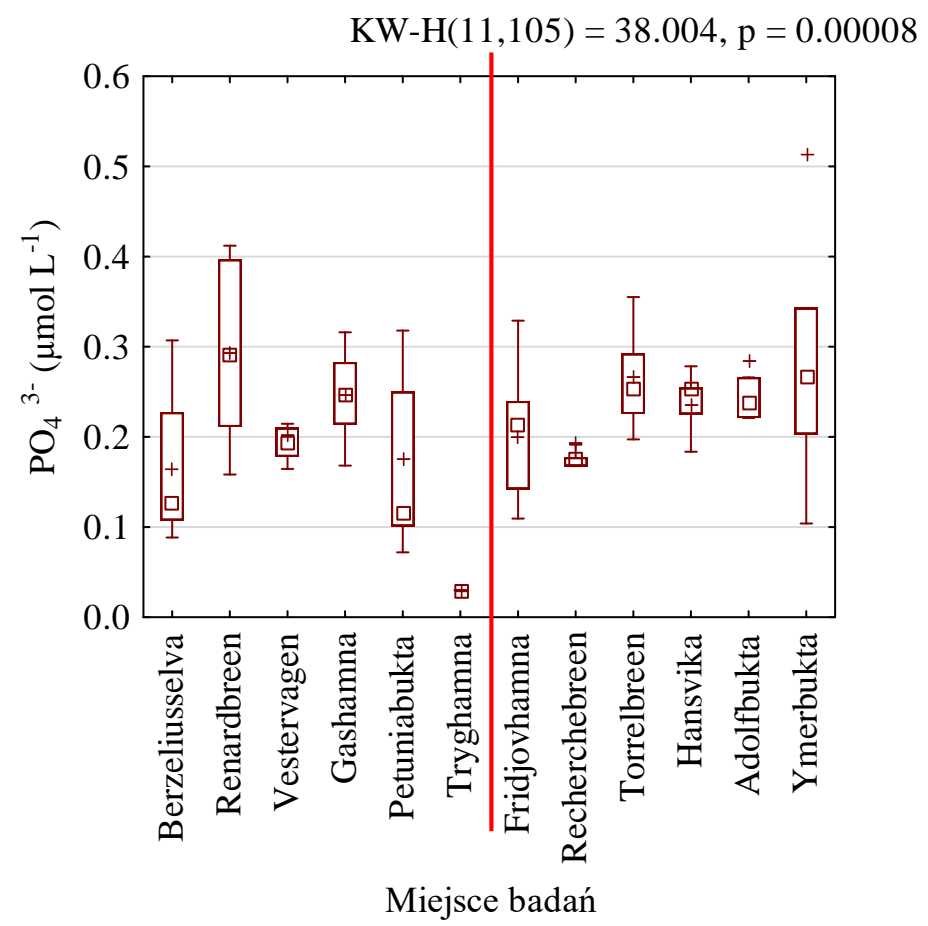
SGD4 0.8 40.0

SGD3 0.3 10.0

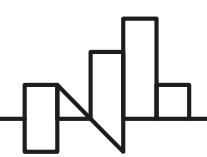
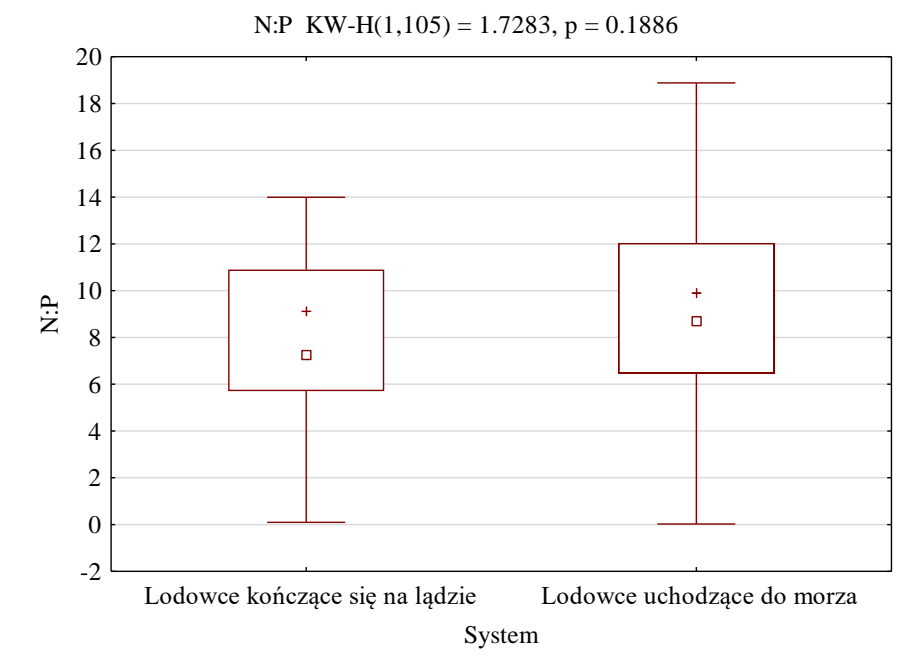
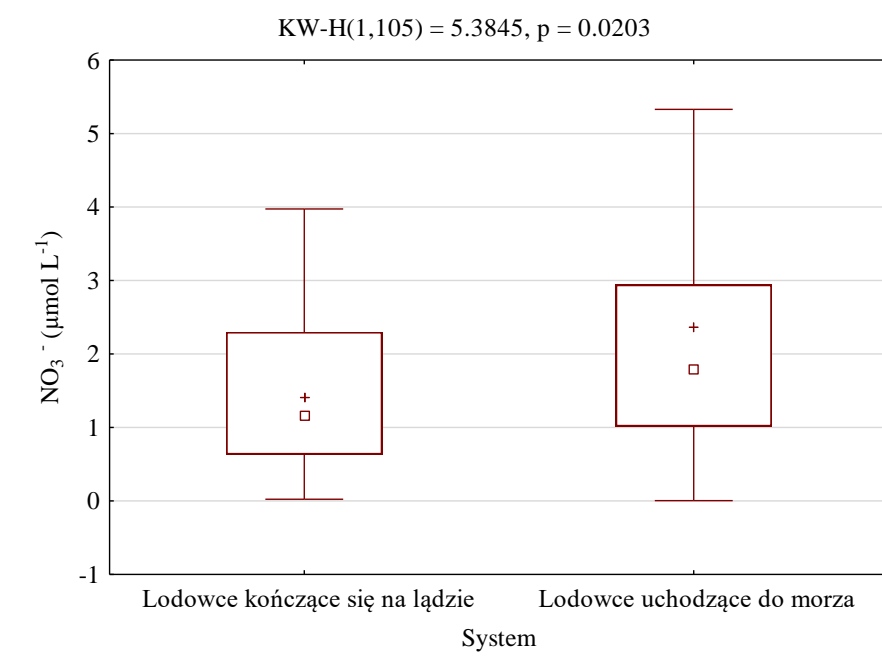
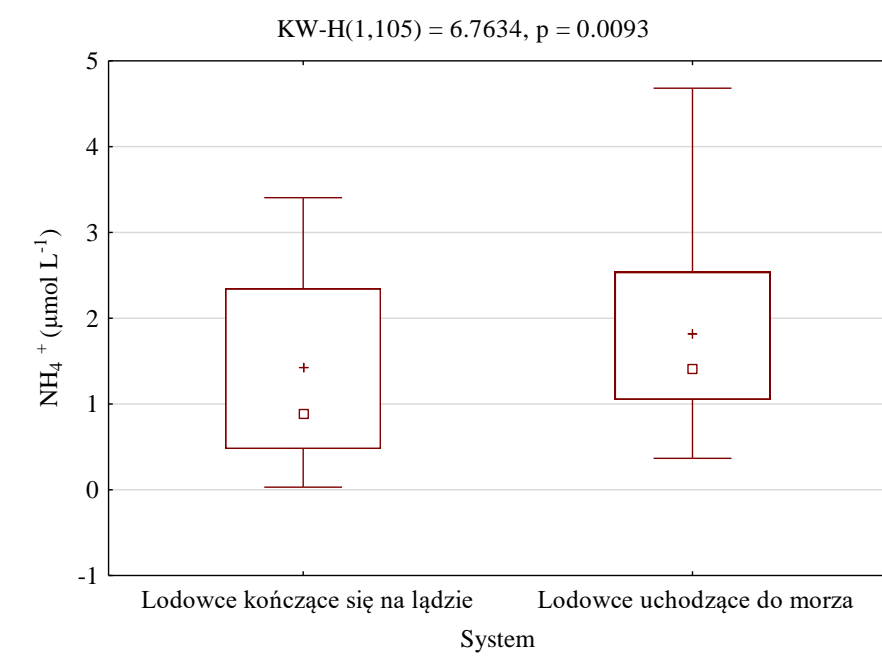
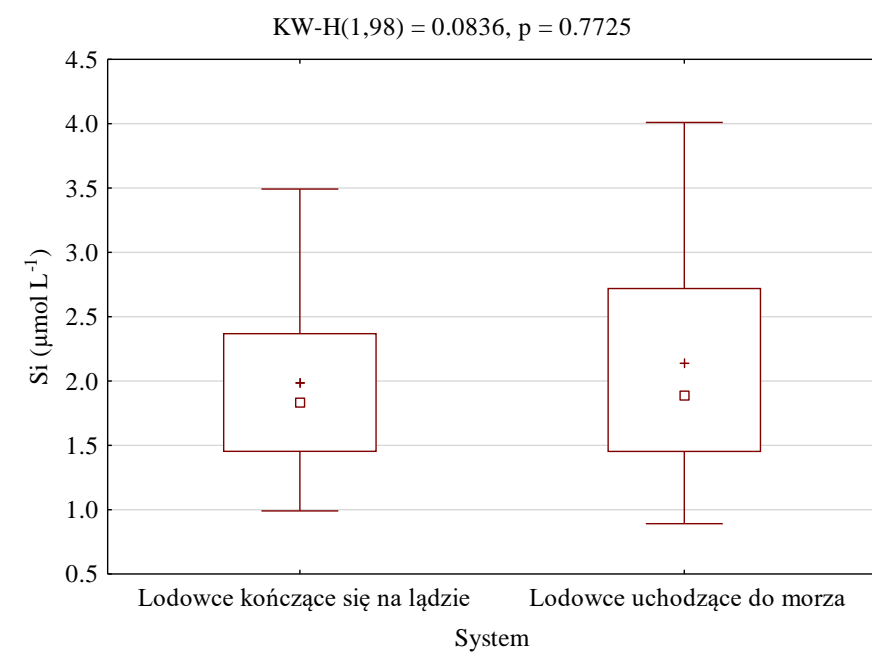
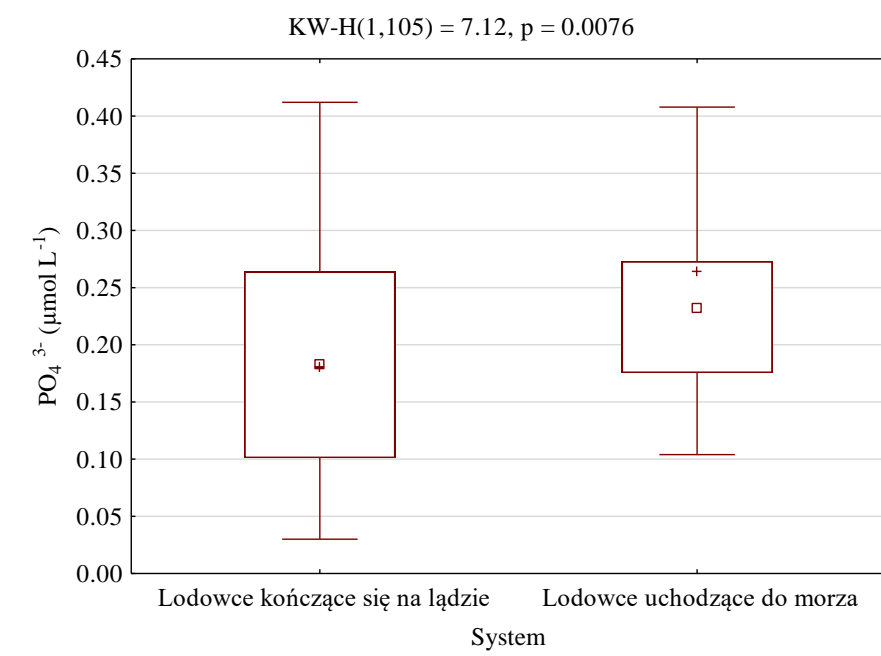




RAW



- Mediana
- ▭ 25%-75%
- ┆ Zakres nieodstających
- + Średnia



Dziękuję za uwagę!

www.eeagrants.org
Facebook, Twitter, LinkedIn, Instagram
YouTube: EEANorwayGrants
Mail: info-fmo@efta.int

Project is operated and co-financed by:



Project is implemented by:



Project is implemented in partnership with

